

PERFUME PUMP CRIMPING MACHINE



Perfume pump crimping machine Operation instruction



PERFUME PUMP CRIMPING MACHINE

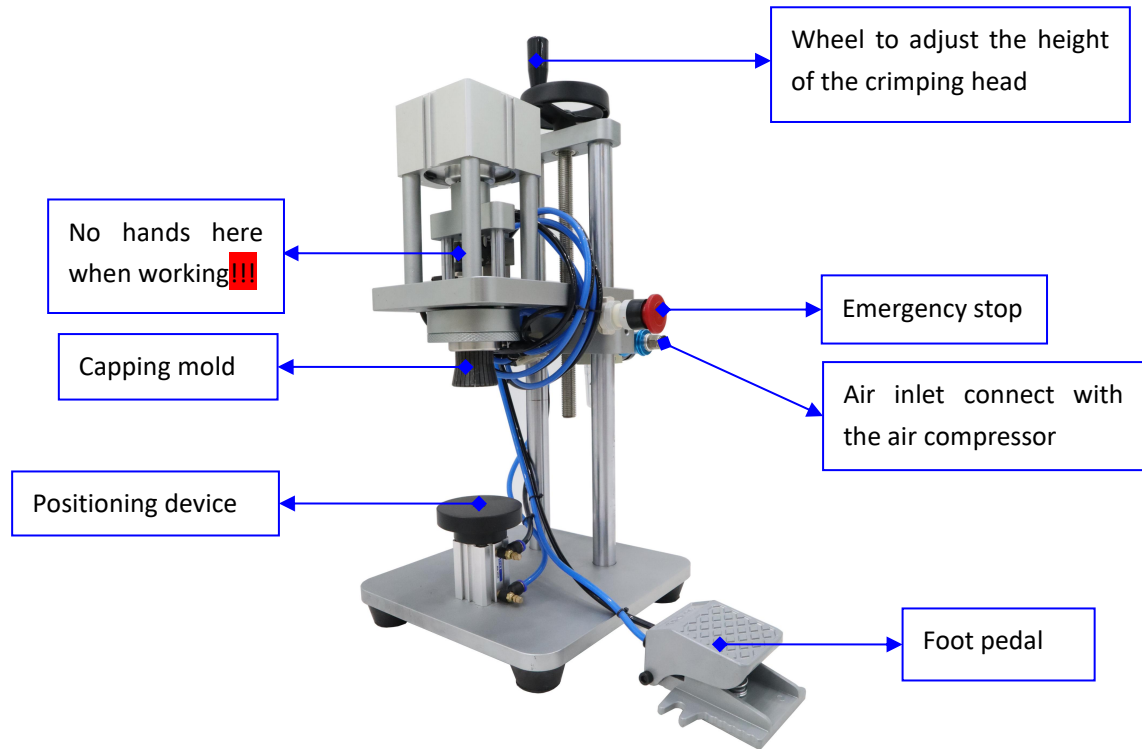
Content

1.Performance Introduction	1
2.Working principle	2
3.Technology parameter	2
4.Adjustment method of crimping head	2

PERFUME PUMP CRIMPING MACHINE

Be sure to read it before use!!

For personal safety, improve production efficiency, correct use and maintenance of the machine, please be sure to read the instructions!



1. Performance Introduction

The machine adopts full pneumatic control, which is especially suitable for the sealing of perfume glass bottles.

The design concept of the crimping machine is to use a special materials to made the crimping head, put the glass bottle with pump head into the mold, seal the pump head and glass bottle by air pressure.

2.Working principle

The working principle of the perfume crimping machine is to open the hand-pull valve and connect the air source. Put the glass bottle with the pump head in the crimping mold, step on the pneumatic switch, use the rising table to make the material bottle straight, at the same time, tighten the cylinder down the crimping head, after tightening the crimping head, the cylinder will automatically return to the original starting point, complete a cycle.

3.Technology parameter

- 1.Size of pump cap: 12-22mm
- 2.Air pressure: 0.4-0.6MPa
- 3.Strength: 4-8kg/cm²
- 4.Size: 270*320*580mm
- 5.Weight: 17kg
- 6.Material: stainless steel&aluminum
- 7.Provide one size of mold freely

4.Adjustment method of crimping head

Loosen the copper core positioning screw in the crimping head. Rotate the copper core to move up and down. Generally adjust the pump head to

PERFUME PUMP CRIMPING MACHINE

be put into the crimping head slightly lower than the lower plane 0.2-0.3mm. The specific adjustment position varies with the pump head.

1. Loose the screw of the mold top inside.
2. Rotate the copper core to move up and down to adjust the pump head into the crimping head to make the pump lower the plane 0.2-0.3mm.
3. Then, tightening the screw of the mold top inside.



Lower the plane 0.2-0.3mm

Operation method

1. Adjust the crimping head lower the plane 0.2-0.3mm

PERFUME PUMP CRIMPING MACHINE



2. Attached the crimping head on the machine.



3. Connect the air compressor and please **do not push the switch** at this moment.

PERFUME PUMP CRIMPING MACHINE

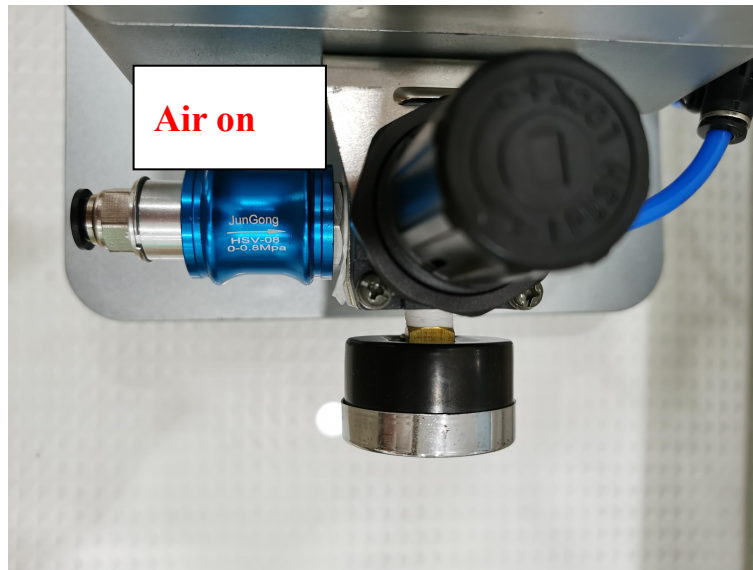


4. Adjust the height of the of the mold to fit the bottle pump while the positioning device is at highest position.



5. Push the air switch like the picture below and adjust the air pressure during 0.4 to 0.6MPa

PERFUME PUMP CRIMPING MACHINE



6. Then, **hold the middle part of the perfume bottle** and crimp the pump.

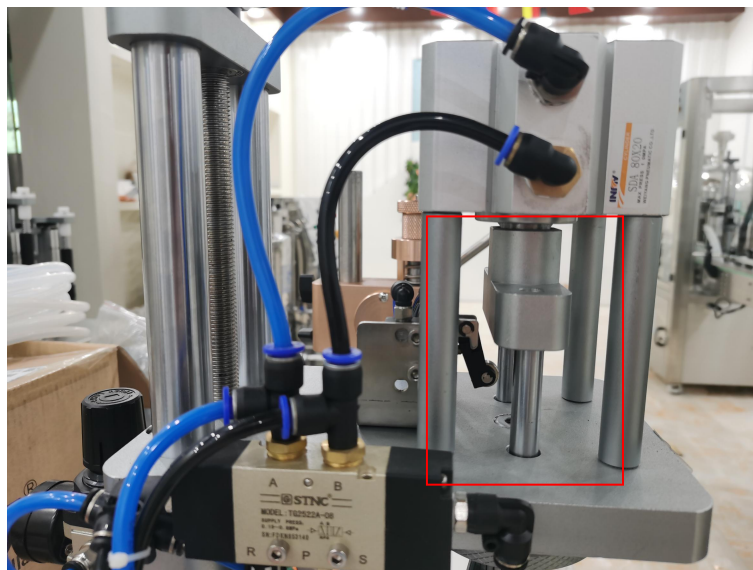
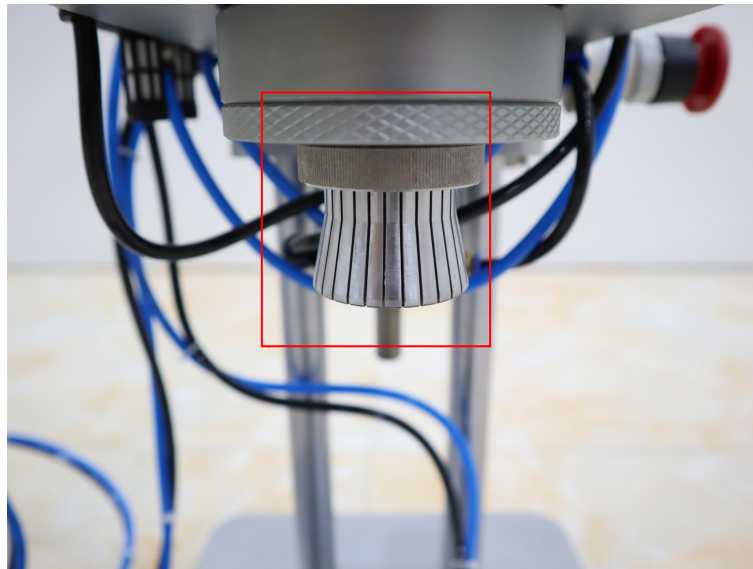
Notes:

1. Please do not touch the pressing head or the part below with your hands when the machine is working. And also do not place foreign objects

PERFUME PUMP CRIMPING MACHINE



under the rolling head.



2. Do not turn on the gas switch until you finished to adjust the bottles

3. Wrong operation may cause dangerous conditions, resulting in injury or damage to the goods! The hand when the machine works is careful close to work area, lest produce person danger!

PERFUME PUMP CRIMPING MACHINE

4. Non-professional technicians, please do not inspect the machine, or it may cause damage.



Customer can also check the teaching video for reference.

Any doubt, please do not hesitate to contact us.